

Blowdown valves for Cooltrol data blowdown units

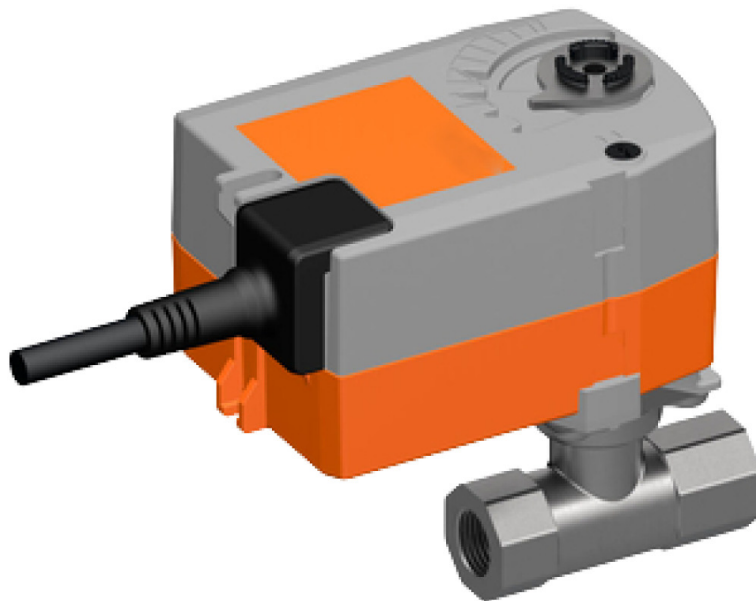
The blowdown valves are available as spare parts for the blowdown units Cooltrol data or as accessories for the bypass measuring sections Cooltrol data BP and the Cooltrol data controller.

BENEFITS

- Suitable for Cooltrol data series
- Motorized ball valve MKB is closed when de-energized, no risk of the system running empty in the event of a power failure

APPLICATIONS

- For controlled blowdown in open water circuits
- MKV and MKB valves are mainly used for contaminated water



Motorised ball valve MKB 15 NC

Blowdown valves for cooltrol data blowdown units

TECHNICAL DATA OF SERIES

Product name	Mains connection V / Hz	Hydraulic connection	Material	Item number
Solenoid valve MV 15	230 / 50	R ½"	Brass, SS, NBR	175 047
Motor driven ball valve MKB 15 NC	100 - 230 / 50 - 60	R ½"	Nickel-plated brass, SS, EPDM	410 231
Motor driven ball valve MKB 20 NC	100 - 230 / 50 - 60	Rp ¾"	Nickel-plated brass, SS, EPDM	410 232
Motor driven ball valve MKB 25 NC	100 - 230 / 50 - 60	Rp 1"	Nickel-plated brass, SS, EPDM	410 233
Motor driven ball valve MKV 15	230 / 50 - 60	DN 15	Nickel-plated brass / hard chrome plated	175 066