

Blowdown valves for Cooltrol data blowdown units

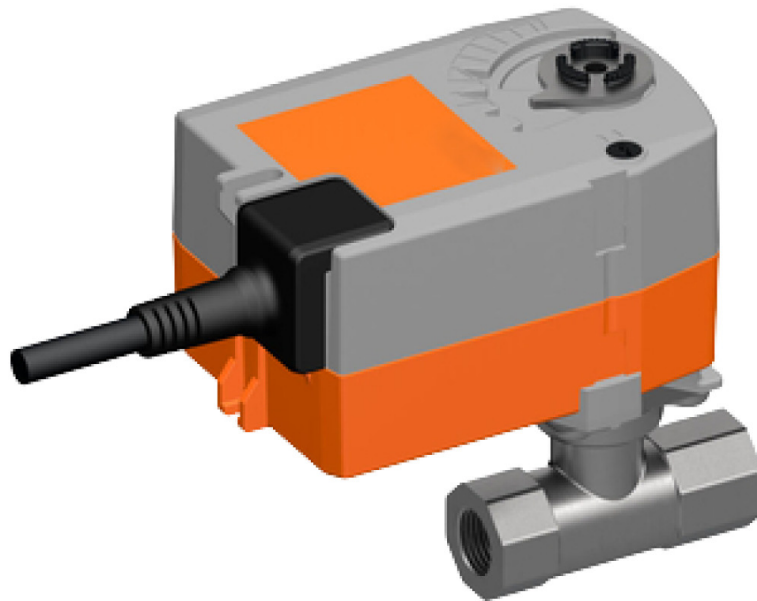
The blowdown valves are available as spare parts for the blowdown units Cooltrol data or as accessories for the bypass measuring sections Cooltrol data BP and the Cooltrol data controller.

BENEFITS

- Suitable for Cooltrol data series
- Motorized ball valve MKB is closed when de-energized, no risk of the system running empty in the event of a power failure

APPLICATIONS

- For controlled blowdown in open water circuits
- MKV and MKB valves are mainly used for contaminated water



Motorised ball valve MKB 15 NC

Blowdown valves for cooltrol data blowdown units

TECHNICAL DATA OF SERIES

| Product name | Mains connection V / Hz | Hydraulic connection | Material | Item number |
|--|----------------------------|----------------------|---|-------------|
| Solenoid valve MV 15 | 230 / 50 | R ½" | Brass, SS, NBR | 175 047 |
| Motor driven ball valve MKB 15 NC | 100 - 230 / 50 - 60 | R ½" | Nickel-plated brass, SS, EPDM | 410 231 |
| Motor driven ball valve MKB 20 NC | 100 - 230 / 50 - 60 | Rp ¾" | Nickel-plated brass, SS, EPDM | 410 232 |
| Motor driven ball valve MKB 25 NC | 100 - 230 / 50 - 60 | Rp 1" | Nickel-plated brass, SS, EPDM | 410 233 |
| Motor driven ball valve MKV 15 | 230 / 50 - 60 | DN 15 | Nickel-plated brass / hard chrome plated | 175 066 |